

## RAIL CROSSING DIVERSION ORDER

### HIGHWAYS ACT 1980, SECTION 119A HERTFORDSHIRE COUNTY COUNCIL

#### Hertfordshire County Council (Royston 17) Rail Crossing Diversion Order 2022

This order is made by Hertfordshire County Council (“the authority”) under section 119A of the Highways Act 1980 (“the 1980 Act”).

The footpath described in paragraph 1 of this order in the authority’s area crosses a railway otherwise than by a tunnel or bridge.

It appears to the authority that it is expedient in the interests of the safety of members of the public using, or likely to use, the said footpath that it should be diverted on to land of another owner as described in the schedule.

The authority has required the operator of the railway to enter into an agreement to defray any compensation which becomes payable in consequence of the coming into force of this order and any expenses which are incurred in the erection or maintenance of barriers and signs and bringing the new site of the footpath into a fit condition for use by the public.

North Herts District Council has been consulted as required by section 120(2) of the 1980 Act.

#### BY THIS ORDER:

1. The public right of way over the land situate at Royston shown by a bold continuous line on the plan attached to this order (“the Order Plan”) and described in Part 1 of the Schedule hereto shall be extinguished after 120 days from the date of confirmation of this order.
2. [Despite paragraph 1 of this order Insert name of Statutory Undertaker shall have the following rights over the land referred to in paragraph 1, namely: describe wayleave rights ]
3. There shall at the end of 120 days from the date of confirmation of this order be a public footpath over the land situate at Royston described in Part 2 of the Schedule and shown by a bold broken line on the Order Plan.
4. The operator of the railway crossed by the footpath described in paragraph 1 shall maintain the structure of the underbridge used by the footpath created by this order.

IN WITNESS whereof the COMMON SEAL of HERTFORDSHIRE COUNTY COUNCIL was hereunto affixed this                      day of                      2022

The Common Seal of  
HERTFORDSHIRE  
COUNTY COUNCIL  
was hereunto affixed  
in the presence of:-

## **SCHEDULE**

### **PART 1**

#### **DESCRIPTION OF SITE OF EXISTING PATH OR WAY**

The full width of that part of Royston Footpath 17 from TL 3400 4074 (point A on the Order Plan) running south east across the railway line for approximately 30 metres to TL 3403 4072 (point B on the Order Plan).

### **PART 2**

#### **DESCRIPTION OF SITE OF NEW PATH OR WAY**

A public footpath commencing from Royston Footpath 17 at TL 3400 4074 (point A on the Order Plan) running east north east on the south side of the field, north of the railway line, for approximately 385 metres to TL 3436 4087 (point C on the Order Plan). Continues north north east on the south east side of the field for approximately 70 metres to TL 3440 4093 (Point D on the Order Plan). Continues south south east along the track for approximately 40 metres to TL 3441 4090 (point E on the Order Plan), then generally south south east for approximately 30 metres, passing under the railway, to TL 3442 4087 (point H on the Order Plan). Continues west south west on the south side of the railway for approximately 430 metres, passing junctions with Hampshire Road at TL 3418 4077 (point L on the Order Plan) and TL 3409 4075 (point M on the Order Plan), to join Royston Footpath 17 at TL 3403 4072 (point B on the Order Plan).

A public footpath commencing from TL 3442 4087 (point H on the Order Plan) and running south south east along the track on the east side of the balancing pond for approximately 35 metres to TL 3444 4084 (point I on the Order Plan) then east north east for approximately 15 metres to join Tamworth Way (public highway) at TL 3445 4085 (point K on the Order Plan) and west south west, for approximately 5 metres to join Rosecomb (public highway) at TL 3443 4084 (point J on the Order Plan).

The land over which the new footpaths run are in the ownership of Network Rail Infrastructure Limited, J A Clayton Limited, Richard Lewin Banks and Edward Andrew Davies, Church Commissioners For England, Redrow Homes Limited, Tilia Homes Limited, Elizabeth Anne Davies, Thomas Watson Henry Reynolds and Hugh Reed Herbert.

**Width:**

- 2.5 metres between TL 3400 4074 (point A on the Order Plan) and TL 3440 4093 (point D on the Order Plan),
  - 4 metres between TL 3440 4093 (point D on the Order Plan) and TL 3441 4090 (point E on the Order Plan),
  - 2 metres between TL 3441 4090 (point E on the Order Plan) and TL 3442 4089 (point F on the Order Plan), narrowing to
  - 1.2 metres between TL 3442 4089 (point F on the Order Plan) and TL 3442 4088 (point G on the Order Plan), widening to
  - 2 metres between TL 3442 4088 (point G on the Order Plan) and TL 3442 4087 (point H on the Order Plan),
  - 2.5 metres between TL 3442 4087 (point H on the Order Plan) and TL 3403 4072 (point B on the Order Plan).
- 
- 3 metres between TL 3442 4087 (point H on the Order Plan) and TL 3444 4084 (point I on the Order Plan),
  - 1.8 metres between TL 3443 4084 (point J on the Order Plan) and TL 3445 4085 (point K on the Order Plan).

**Limitations:           None**

3400 3405 3410 3415 3420 3425 3430 3435 3440 3445

# Draft

This plan forms part of the Hertfordshire County Council  
(Royston 17) Rail Crossing Diversion Order 2022

Existing Footpath 

Footpath to be Extinguished 

Footpath to be Created 

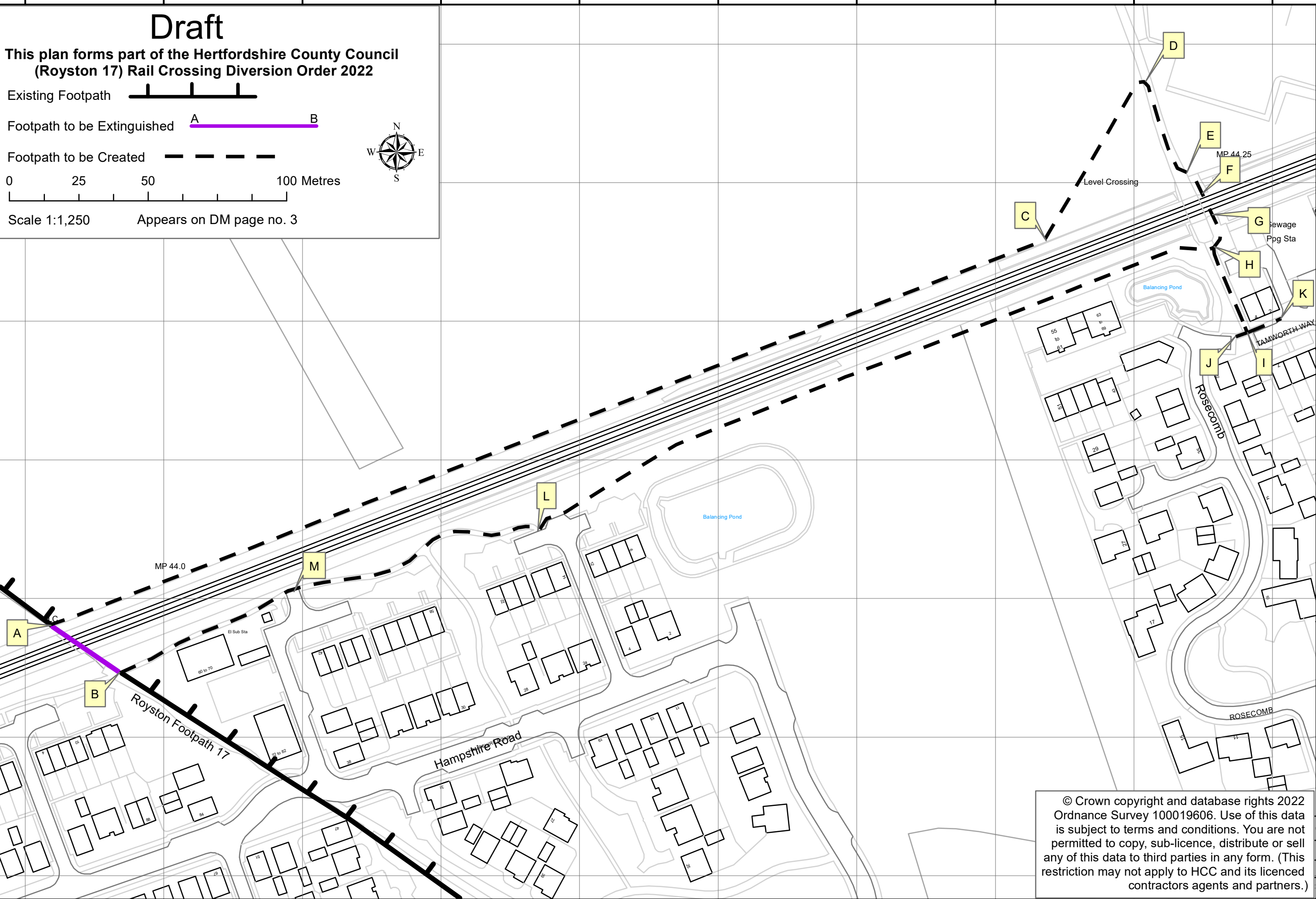
0 25 50 100 Metres

Scale 1:1,250 Appears on DM page no. 3



4095  
4090  
4085  
4080  
4075  
4070  
4065

4095  
4090  
4085  
4080  
4075  
4070  
4065



© Crown copyright and database rights 2022  
Ordnance Survey 100019606. Use of this data  
is subject to terms and conditions. You are not  
permitted to copy, sub-licence, distribute or sell  
any of this data to third parties in any form. (This  
restriction may not apply to HCC and its licenced  
contractors agents and partners.)

3400 3405 3410 3415 3420 3425 3430 3435 3440 3445